



2026 SUMMER CAMP

June 8–August 7



NORTHFIELD PARK DISTRICT

northfieldparks.org | 847.446.4428

Northfield Park District Summer Camps



June 8–August 7, 2026 (9 weeks)

Camps for ages 3 years old–8th grade

Counselor in Training Program for children entering grades 6th–9th

Choose from a variety of camps that will make your child's summer a fun, safe, and memorable one. In our friendly, nurturing and creative environment, your child will play, grow and explore, while building self-confidence, making friends and lasting memories.

Camp days are filled with loads of activities, games, learning, discovery, imagination, sportsmanship, adventure and lots of fun.

Our camps not only provide an outlet for children to increase their self-esteem, but also their sense of who they are and what they love to do.

Staff

Our well-trained, experienced staff is committed to your camper's safety and well-being. Staff works hard to ensure that your child will have a great camp experience.

Flexible Scheduling Options

Register for camp by the day! Our camps offer ultimate flexibility by allowing you to pick and choose the days that fit your camper's schedule throughout the summer.

Variety

From sports, to arts and crafts, pool days and field trips, we have the right fit for your camper!

Value

You can't beat the Northfield Park District for a truly terrific camp experience at affordable prices.

Camp Questions?

Contact Vicki Heuer, Director of Recreation, vheuer@nfparks.org or 847.446.4428.

Dates to Remember

Registration

January 19	Resident registration begins for all camps
February 2	Non-resident registration begins for all camps
March 31	Early bird registration deadline to save 10%
May 15	Deadline for Northfield Park District residents to apply for financial assistance
June 1	Partial payment balance due
June 7	Week 1 registration closes at 11:59PM*

***All registrations for the following week close at 11:59PM on the Sunday before said week begins.** Requests to register for the current week will be accommodated based on availability and will be subject to an additional fee.

Refunds

Fully withdrawing from any camp will incur the following penalties at the listed dates.

January 19-April 30	Full refund less a \$50 service fee/camper
May 1-22	Full refund less a \$100 service fee/camper
May 22	Deadline for any refunds for dropping days

SUMMER JOB OPPORTUNITIES

Do you like kids? Looking for summer work?
Visit northfieldparks.org or stop by the Northfield Community Center and fill out an application to be a camp counselor.



All camps are held at the
**NORTHFIELD
PARK DISTRICT**

401 Wagner Road, Northfield, IL 60093
847.446.4428 | northfieldparks.org

CAMP INFO

CAMP PRICING.....	4
BEFORE CAMP PROGRAM.....	5
GIGGLE GANG.....	6
Ages 3-5	
TRAILBLAZERS.....	7
Entering grades 1st-4th	
SPORTS CAMP.....	8
Entering grades 1st-4th	
EXPLORERS.....	9
Entering grades 5th-8th	
COUNSELORS IN TRAINING...10	
Entering grades 6th-9th	
CAMP INFO.....	11-12
REGISTRATION INFO.....	13-19

Thank You!
PARK PARTNERS

NORTHVIEW
BANK & TRUST
A branch of Northbrook Bank & Trust Company, N.A.
A WINTRUST COMMUNITY BANK


EverSmiles
ORTHODONTICS

Stormy's
Tavern and Grille

**The Village of
Northfield**

Register for Camp by the Day!

We will once again be offering ultimate flexibility and allowing you to pick and choose the days that fit your camper’s schedule throughout the summer. For Giggle Gang, Trailblazers, and Sports Camp, you can select any combination of half days and full days to meet your needs.

Trailblazers and Sports Camp field trips are full day this summer! For that reason, no half day registrations are permitted for those two camps on Wednesdays.

Early Bird
\$avings



Register for camp
by end of day
on Tuesday, March 31
and SAVE 10%

Daily Cost Per Camper				
Giggle Gang (3-5 yrs old), Trailblazers (1st-4th Grade) & Sports Camp (1st-4th Grade)			Explorers (5th-8th Grade)	
	Residents	Non-Residents	Residents	Non-Residents
Half Days 9am-12pm	\$49.29 per day	\$59.14 per day	na	na
Full Days 9am-3pm	\$69.00 per day	\$82.80 per day	\$85 per day	\$102 per day





Before Camp

3 years old-8th Grade

Our Before Camp program runs from 7-9AM and provides campers an atmosphere that is relaxed and fun. Activities range from indoor and outdoor playtime to organized activities such as crafts, sports, and games.

Before Camp Daily Fee	
Residents	Non-Residents
\$22.45	\$26.94

Minimum Camp Size: at least 8 campers must be enrolled to run Before Camp.

**WE'RE PROUD TO SPONSOR
NORTHFIELD PARK DISTRICT**

Going the extra mile.



NORTHVIEW®
BANK & TRUST
A WINTRUST COMMUNITY BANK
www.northview.com

Northview Bank & Trust is a branch of Northbrook Bank & Trust Company, N.A.



Register at northfieldparks.org

Giggle Gang AGES 3-5 Campers must be 3 years old by the start of camp

Giggle Gang introduces your campers to the fun of summer through outdoor play, games, songs, group activities, arts and crafts, field trips, special performances, entertainment, and water days at camp!

Giggle Gang campers meet rain or shine and need to bring a nut-free snack and beverage every day. Those attending full day will also need a nut-free sack lunch.

Giggle Gang campers must be 3 years old by the start of camp and must be potty-trained.

Giggle Gang campers will be in groups based upon their age as of September 1, 2026.

All campers entering Kindergarten in the fall of 2026 will be in the 5 year old group.

Max per day: 120 campers

Camp Fee

Residents:

\$49.29/day half day program

\$69.00/day full day program

Non-residents:

\$59.14/day half day program

\$82.80/day full day program



Entering 1st-4th Grade Trailblazers

Trailblazers know how to do it right!

Join Trailblazers and experience the ultimate summer fun! This diverse camp offers a wide variety of activities including water days at camp, sports, games, science days, field trips, special entertainment, arts and crafts and more!

Trailblazers meet rain or shine and all campers need to bring a nut-free snack and beverage each day. Those attending full day also need a sack lunch.

Max per day: 120 campers



Camp Fee

Residents:

\$49.29/day half day program

\$69.00/day full day program

Non-residents:

\$59.14/day half day program

\$82.80/day full day program

Wednesdays

are

**FULL DAY Field Trips
for Trailblazer Campers**

*Full day schedule only
on Wednesdays, no half days.*



Register at northfieldparks.org

Sports Camp Entering 1st-4th Grade

Join us for a great summer of non-stop action!

Sports Camp is an athletics-driven camp for children of all ability levels. This camp combines sports along with other recreational activities and a variety of field trips. Safety and encouragement of each camper's individual unique abilities are top priorities in this camp.

Campers meet rain or shine and need to bring a nut-free snack and beverage each day. Those attending full day also need a sack lunch.

Max per day: 40 campers

Camp Fee

Residents:

\$49.29/day half day program
\$69.00/day full day program

Non-residents:

\$59.14/day half day program
\$82.80/day full day program

Wednesdays are FULL DAY Field Trips for Sports Camp Campers

Full day schedule only on Wednesdays, no half days.



Entering 5th-8th Grade Explorers

Are you ready for trips, fun, and sun with your friends?
Then Explorers is for you!

This active camp takes FIVE trips a week to exciting Chicago area attractions! We'll meet rain or shine. All campers should bring a sack lunch or money to buy lunch each day.

Maximum per day: 40 campers



Campers are NOT allowed to be dropped off or picked up from field trip destinations. All campers must travel to and from field trips with the group for safety reasons.

Camp Fee

Residents:
\$85/day

Non-residents:
\$102/day



Register at northfieldparks.org

Counselors in Training (CITs) Entering 6th-9th Grade

REGISTRATION

Resident registration
begins January 19

Non-resident registration
begins February 2

DATES

Session 1: June 8-July 10

Session 2: July 13-August 7

TIMES

Half Day: 8:15AM-12PM

Full Day: 8:15AM-3PM

Session 1 (5 weeks)

Resident Half Day: \$561.13

Resident Full Day: \$785.58

Non-Resident Half Day: \$673.36

Non-Resident Full Day: \$942.70

Session 2 (4 weeks)

Resident Half Day: \$448.91

Resident Full Day: \$628.47

Non-Resident Half Day: \$538.69

Non-Resident Full Day: \$754.16

Camp fee includes two t-shirts.

Additional CIT shirts can be
purchased for \$15 each.

**Must sign up for at least
one full session.**

*For scheduling purposes, no CIT
refunds will be given once camp
has started June 8, 2026 regardless
of the CIT's start date.*

Not only will CITs have a great time working with the kids, but they'll develop leadership skills and leave equipped with life skills to help them in the future.

CITs are assigned to one of the Northfield Park District summer camp programs after undergoing mandatory training. CITs help implement activities and projects under the supervision of the Park District camp staff.

CITs will be trained in safety, communication, leadership and more and will also receive guidance regarding any questions or concerns they have throughout the summer.

Being responsible and committed are essential traits of all Counselors in Training so all CITs must sign up for at least one full session and are expected to be on time and ready every day.

MANDATORY CIT TRAINING: May 21 from 5-6:30PM
All CITs must attend.

Register as early as possible. CIT spots are limited.



Important Camp Info

Residency Policy

Recreation program residency rates apply to everyone who lives or works in Northfield or lives within the Park District boundaries. In general, boundaries are: West of the Edens, North of Winnetka Avenue, East of Waukegan Road, and South of Voltz Road. Children who attend a school within the boundaries are also eligible for resident rates.

Grade Information

The grade listed for each camp is the grade campers are entering in the fall of 2026.

Special Accommodations/Inclusion

The Northfield Park District encourages participation by everyone! If you or a family member have special needs and would like to participate in a program, we would be happy to make accommodations to meet your needs.

Please contact Vicki Heuer at 847.446.4428 or vheuer@nfparks.org for information regarding our inclusion programs and/or accommodations for program participants according to the Americans with Disabilities Act.

Financial Assistance

The Northfield Park District believes in making programs available for all children in Northfield. If you are in need of financial assistance in order to participate, please contact Vicki Heuer at vheuer@nfparks.org to receive forms to apply. Assistance will be granted to families who qualify based upon need and availability of funds.

Scholarships are available to Northfield Park District residents only. Scholarship forms are due by May 15. No requests can be accepted after this date.

Health & Safety Emergency Form

The Park District does not require children to have a medical examination to attend camp. However, prior to the start of camp, we email parent packets that contain an emergency form. It is very important to complete the form accurately. If your child has special needs such as allergies, or medical alerts such as epilepsy or asthma, please include this information with home, work and cell phone numbers on the form.

EVERY TUESDAY
6:00 - 8:00 PM



Bring your friends!
Play all categories!

Prizes by Stormy's Tavern & Grille

Stormy's
TAVERN and GRILLE

Carry Out & Delivery Available Daily 11 AM - 8 PM

847.441.8290

www.stormystavern.com
1735 Orchard Lane • Northfield

Important Camp Info

Absence from Camp

If you need to leave a message for a staff member or call in a sick child, call 847.446.4428 after 8AM.

If your child misses camp due to sickness, a doctor's note may be required before they return. Email Vicki at vheuer@nfparks.org.

Camp Staff

Counselors at each camp are mature and enthusiastic college and high school students. All camp staff members attend a training program, which includes supervision and safety techniques, activity development and first aid/CPR.

Camp Activity Calendars

Calendars will be posted to our website in the coming weeks. The calendars will give you a general idea of weekly activities to help parents choose their camp days. Please note that all activities for Giggle Gang, Trailblazers and Sports Camps occur in the morning (9AM-Noon).

ALL CALENDAR ACTIVITIES ARE SUBJECT TO CHANGE.

Parent Manuals

Parent manuals for all camps will be emailed at the end of May. These packets contain information about snacks, lunch, field trips, beach days, swimming activities, hours, camp calendars, and an emergency form. If you wish to have yours mailed instead, please let us know.

Reporting Safety Concerns

The Northfield Park District is committed to providing a safe place for recreational activities. We encourage residents to report safety concerns about our facilities and parks by contacting Jim Reuter at 847.446.4428.



Proud to support Northfield Park District and the programs that keep our community active and thriving – and smiling!



We offers FREE orthodontic exams and ongoing six-month check-ins to monitor growth and address concerns so families stay informed and confident as their child's smile develops, starting at age seven.



840 Willow Road, Northbrook - Near Whole Foods

 info@EverSmilesnorthbrook.com  224-904-1380  www.EverSmilesVIP.com



Easy Ways to Register!

Resident Registration begins January 19

Non-resident Registration begins February 2

Register Online

Visit northfieldparks.org to log in or create a new account. If you set up a new account, you'll receive an email confirmation within 48 hours, Monday-Friday. You'll need your password each time you log in. See pages 14-19 for online registration walk-through.

Forgot your Login Information?

Click on the "forgot password" button to reset your password. Please do not create a new account as this will create multiple accounts for you and can create problems when trying to register.

Payments

Camp payments may be made by cash, check, credit card (Visa, MasterCard and Discover), or eCheck and may be made in person at the Northfield Community Center, 401 Wagner Road, or by mail. Make checks payable to the Northfield Park District. There is a \$25 service charge for returned checks and a \$1 service charge for returned eChecks.

A 3% service fee charged for all credit card/debit card transactions and a \$1 service fee for eChecks.

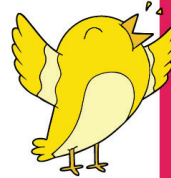
Payment Plan

Use our convenient Partial Payment Plan that allows you to put only \$100 down (per camper) when you register and pay your balance on June 1. If you would like to pay using our payment plan, please register in person at the Community Center. Full payment must be made at the time of registration when signing up online.



Don't Wait!

**REGISTER
SOON**



Early registration is recommended due to the popularity of our camps.

Some days may fill.

**EARLY BIRD
REGISTRATION
ENDS MARCH 31**

Registration Deadline

The deadline to register for camp is 11:59PM on the Sunday before the following week. We enforce this deadline to allow for staffing, activity scheduling, and informational mailings. Requests to register for the current week will be accommodated based on availability and will be subject to an additional fee.

Anyone registering after camp has started may be put on a waiting list and will be placed in the camp if there is room.

T-shirts may not be available for campers registering after the first day of camp.

EARLY BIRD REGISTRATION ENDS MARCH 31.

Refund Policy

If a refund request is made by April 30, a full refund is processed, less a \$50 service charge per camper. From May 1 through May 22, a full refund, less a \$100 service charge per camper will be processed.

No Refunds will be Granted AFTER May 22

We do our best to issue refunds as quickly as possible, but delays sometimes occur to ensure accuracy. Check refunds take approximately two weeks. Credits to charge cards can take six to eight weeks to appear on your statement. Refunds cannot be done online.

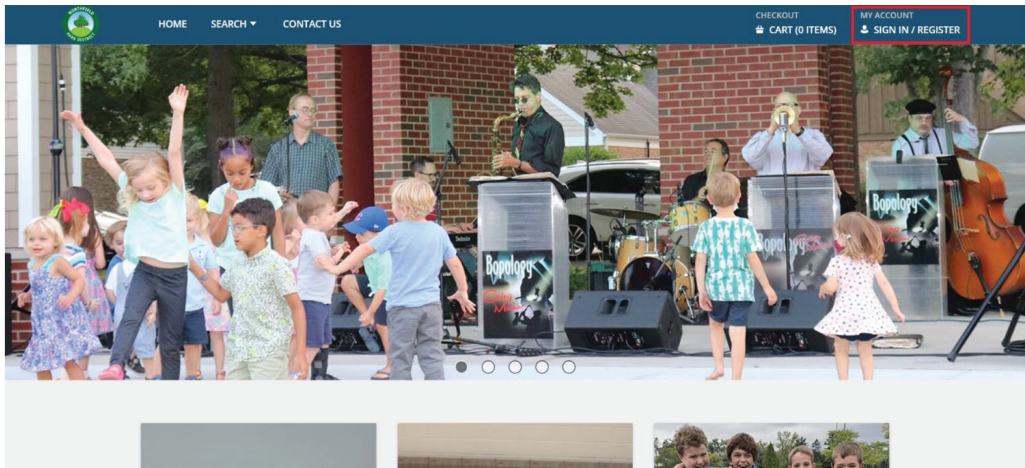
Register at northfieldparks.org

Registering Online



[How to Register for Summer Camp](#)

1. Start by going to <https://northfieldparks.org/> and click the orange "Program Registration" button on the home page.
2. Click the "My Account Sign In/Register" button in the top right of the blue bar at the top of the screen.

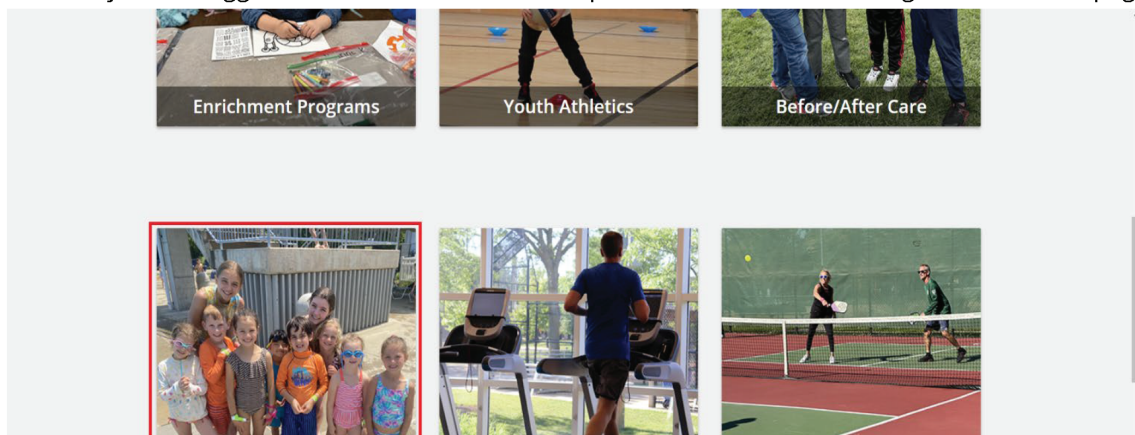


Registering Online



3. On the next screen, enter your Username and Password and click the “Log In” button.
 - a. If you have EVER signed up for any Northfield Park District program or fitness membership, you have an active account. Please click the “Forgot Password” button to reset your password. Do NOT create a new account.
 - b. If you are brand new to our district, please click the “Don’t have an account? Sign Up Now” button and complete the form. You will get an email when your account has been approved, which may take up to 48 hours.

4. Once you are logged in, click the “Summer Camps” button on the online registration home page.



Registering Online



5. On the next page, all our summer camps and Before Camp Care will be listed. Choose the camp and section you wish to register for and click on the calendar icon button under the “Add to Cart” header.

a. For this example, I will be registering for Trailblazers Half Days, Activity 4602-1.

☒ Day Camp

☐ Parks Foundation Don...

☐ Middlefork Special Days

☐ Rentals

Select AllClear Selection

► Age (0)

► Grade (0)

► Keyword Search

► Activity Number

Search

Reset

Giggle Gang - 4601

Giggle Gang campers must be 3-5 years old by the start of camp and must be fully potty-trained.

2 Sections

Trailblazers - 4602

Trailblazers is for campers entering 1st through 4th grade in the fall. Campers will meet rain or shine and need to bring a snack and a water bottle each day. All full-day campers also need to bring a sack lunch each day. Choose your days!

Trailblazers offers a wide variety of activities including water days at camp, sports, games, science days, special entertainment, arts and crafts, and more! Full day field trips every Wednesday!

Due to all Trailblazers and Sports Camp field trips being full day on Wednesdays, no half day registrations are permitted for those two camps on Wednesdays.

Please choose your camper t-shirt sizes carefully. All campers will receive only their requested shirt size.

2 Sections

Add to Cart	Activity #	Description	Ages	Grades	Day	Dates	Times	Location	Info
	4602-1	TB Half Days	1-4		M, Tu, Th, F	06/10/2024 -08/09/2024*	9:00 am -12:00 pm	Northfield Community Center	Item Details
	4602-2	TB Full Days	1-4		M, Tu, W, Th, F	06/10/2024 -08/09/2024*	9:00 am -3:00 pm	Northfield Community Center	Item Details

Sports Camp - 4603

Sports Camp is for campers entering 1st through 4th grade in the fall. Campers will meet rain or shine and need to bring a snack and a water bottle each day. All full-day campers also need to bring a sack lunch each day. Choose your days!...

2 Sections

6. The following page will be a calendar with all the available days shown for the option you selected.

☐ Special Events

☐ Senior Programs

☐ Youth Athletic Programs

☐ Youth General

Select AllClear Selection

► End Month

► Age (0)

► Grade (0)

► Keyword Search

► Activity Number

▼ Year

2024

Search

Previous Year

Previous Month

Today

June 2024

Next Month

Next Year

Sunday	Monday	Tuesday	Wednesday	Thursday	Friday	Saturday
26	27	28	29	30	31	1
2	3	4	5	6	7	8
9	10 TB Half Days 9:00 am-12:00 pm 40 of 40 Available	11 TB Half Days 9:00 am-12:00 pm 40 of 40 Available	12	13 TB Half Days 9:00 am-12:00 pm 40 of 40 Available	14 TB Half Days 9:00 am-12:00 pm 40 of 40 Available	15
16	17 TB Half Days 9:00 am-12:00 pm 40 of 40 Available	18 TB Half Days 9:00 am-12:00 pm 40 of 40 Available	19	20 TB Half Days 9:00 am-12:00 pm 40 of 40 Available	21 TB Half Days 9:00 am-12:00 pm 40 of 40 Available	22

Registering Online



- To sign up, select any days you wish to register for by simply clicking in the green section of any days you want. Each day selected will be listed at the bottom of your screen.

a. To unselect days, simply click on the lime green day button again.

Special Events
Senior Programs
Youth Athletic Programs
Youth General

Select All Clear Selection

End Month

Age (0)

Grade (0)

Keyword Search

Activity Number

Search

Previous Year Previous Month Today June 2024 Next Month Next Year

Sunday Monday Tuesday Wednesday Thursday Friday Saturday

26 27 28 29 30 31 1

2 3 4 5 6 7 8

9 10 11 12 13 14 15

10 Half Days 9:00 am-12:00 pm 40 of 40 Available

13 Half Days 9:00 am-12:00 pm 40 of 40 Available

10 Half Days 9:00 am-12:00 pm 40 of 40 Available

13 Half Days 9:00 am-12:00 pm 40 of 40 Available

1 Selected Items

TB Half Days (4602-1): 06/10/2024 @ 9:00 am, 06/13/2024 @ 9:00 am

Clear Selection Add To Cart

- Once you have selected all the days you want to sign up for, click the “Add to Cart” button in the bottom left of your screen. In our example, I will be signing up for TB Half Days (4602-1) on 6/10/24 and 6/13/24.

Special Events
Senior Programs
Youth Athletic Programs
Youth General

Select All Clear Selection

End Month

Age (0)

Grade (0)

Keyword Search

Activity Number

Search

Previous Year Previous Month Today June 2024 Next Month Next Year

Sunday Monday Tuesday Wednesday Thursday Friday Saturday

26 27 28 29 30 31 1

2 3 4 5 6 7 8

9 10 11 12 13 14 15

10 Half Days 9:00 am-12:00 pm 40 of 40 Available

13 Half Days 9:00 am-12:00 pm 40 of 40 Available

10 Half Days 9:00 am-12:00 pm 40 of 40 Available

13 Half Days 9:00 am-12:00 pm 40 of 40 Available

1 Selected Items

TB Half Days (4602-1): 06/10/2024 @ 9:00 am, 06/13/2024 @ 9:00 am

Clear Selection Add To Cart

Registering Online



9. The next screen will show you all family members in your household who are eligible to sign up for the days of the certain camp that you have selected. For this example, Res Reuter is the only one able to sign up for Trailblazers Half Days, so I have checked the box in front of the activity under their name. Click "Continue" to proceed to the Questions/Waiver page.

The screenshot shows a web interface for 'Family Member Selection'. At the top is a dark blue header with the Northfield Park District logo, navigation links (HOME, SEARCH, CONTACT US), and user information (CHECKOUT, CART (0 ITEMS), JIM, REUTER #5125). The main content area has a title 'Family Member Selection' and a table with one row for 'Res Reuter'. The table has a checkbox for 'TB Half Days (4602-1)' which is checked. Below the table are two buttons: 'Continue' (green) and 'Cancel' (white).

10. On the Question/Waiver page:
- Select your camper's t-shirt size.
 - Check the "Copy Questions" box in the top left above the question to ensure you only have to answer the question once per registration.
 - Check the "I agree with the above" box under the waiver and click "Continue".
11. The next screen will show your shopping cart with all the days you are about to register for listed along with who in your household is being signed up for that day of the listed program. Check this screen to make sure everything you want to register for is there and, if so, click "Proceed to Checkout".
- If you wish to enroll another camper on the same receipt, simply click the "Home" button in the blue header bar and repeat steps 4-11 before clicking "Proceed to Checkout".

Registering Online



12. On the Checkout screen, make sure all the information is correct, select your payment method, Credit Card or e-Check, and then enter your payment information.
 - a. Please note that there is a 3% service fee applied to all credit/debit card transactions and a \$1.00 service fee applied to all e-Check transactions. The corresponding fee will be shown at the top of the page under your "Summary of Charges".
13. Once you have entered your payment method and confirmed all your personal information is correct, check the "I'm not a robot" button for the CAPTCHA, and then click "Continue" to complete checkout and registration.
14. Once your transaction has been fully processed your receipt will be emailed to the email address on file.
15. Congratulations! You are all registered for Summer Camp!
 - a. If you have any questions or need help registering online, please email Sammie at sjacob@nfparks.org or call 847.446.4428.





Northern Suburban Special Recreation Association (NSSRA) facilitates year-round recreation programs and services for children, teens, and adults with disabilities living in 13 northern suburban communities, including Northfield. With nearly 500 recreation, sport, cultural, and social offerings available throughout the year, NSSRA specializes in introducing participants to new experiences, providing opportunities for skill development and leisure time, and, most importantly, creating space for friendships to thrive.

Services NSSRA Offers

NSSRA serves approximately 1,800 individuals with disabilities through our traditional and cooperative programs. Participants range in age from preschoolers, youth, and teens to young adults, adults, and seniors. Programs are offered at park district facilities, schools, and other locations throughout the northern suburbs.

Inclusion Support

NSSRA's inclusion support option provides individuals the opportunity to enjoy participation in Northfield programs while receiving the individualized support they need to succeed. NSSRA staff are trained to provide the necessary accommodations to help participants succeed in programs. This not only benefits individuals with disabilities but also enhances the overall experience for all participants, creating a more inclusive and welcoming environment.

Reasons to request inclusion support

- ▣ A parent or family member recognizes that a participant would benefit from additional support in a Northfield Park District Program.
- ▣ Northfield Park District staff identify a need for additional support, for safety and programmatic reasons, and communicate this need to the family.

What types of services does inclusion provide?

- ▣ Activity Modification
- ▣ Disability Awareness Training
- ▣ Behavior Management Support
- ▣ Observation and Evaluations
- ▣ Adaptive Equipment
- ▣ Visual Systems
- ▣ Varying Levels of Staff Support

For information on Inclusion services or to arrange accommodation, contact Northfield Park District's NSSRA Inclusion Liaison, Vicki Heuer, at (847) 446-4428 or vheuer@nfparks.org.

1221 County Line Rd.
Highland Park, IL 60035

(847) 509-9400
info@nssra.org
www.nssra.org

Learn more about NSSRA and view our program offering at nssra.org

nssra.org

