

Northfield Park District

Rooted in Community. Growing for Tomorrow.
Referendum 2026



Rooted in Community. Growing for Tomorrow.

At the Park District, we believe our parks are more than just a places on a map.

- Willow Park
- Clarkson Park
- Community Center
- Fox Meadow Park

Taken together, they're the heartbeat of our community and make residents feel a part of something bigger than themselves. When we strengthen these shared spaces, we strengthen the roots of our community.

Today, and for generations to come.



**OUR
COMMUNITY
IS OUR
STRENGTH.**

An Investment in Our Parks, is an Investment in Your Home.

Our parks and programs not only bring people together but also enhance property values.

Data from the National Parks and Recreation Association shows the **addition of local parks can increase property values up to 10%.**

The bond between our parks and community relies on our shared growth.

To support sustainable growth and implement the Comprehensive Master Plan, the Park District will ask residents to vote on a referendum during the March 2026 election.



What Will a Referendum Fund?

A limiting rate referendum would support every aspect of the park district.
This includes but is not limited to:

**EXECUTE
2023 MASTER PLAN
PROJECTS**

**STRENGTHEN
ONGOING
MAINTENANCE**

**INCREASE
PARK DISTRICT'S
GROWTH CAPACITY**



What Will a Referendum Fund?

A limiting rate referendum would support every aspect of the park district.

This includes but is not limited to:

**EXECUTE
2023 MASTER PLAN
PROJECTS**

**STRENGTHEN
ONGOING
MAINTENANCE**

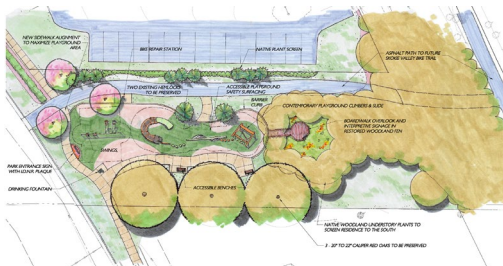
**INCREASE
PARK DISTRICT'S
GROWTH CAPACITY**



New Northside Pocket Park

\$600K

- ▶ Playground, bike repair station, benches, new plantings, woodland overlook
- ▶ Intergovernmental cooperation with Village of Northfield (land leased for \$10)
- ▶ Add a pocket park within walking distance for our northside residents
- ▶ Connection to future Skokie Valley Trail



Community Center Expansion

\$2-\$3M

- ▶ Add indoor space for summer camps and growing youth programs (appx 3,000 sq ft)
- ▶ Add community meeting/flex space
- ▶ Replace roof and address aging infrastructure



Willow Park Restrooms & Maintenance Facility Improvements

\$2.5-\$3.5M

- ▶ Add outdoor restrooms for park users
- ▶ Add heat and water to the maintenance facility
- ▶ Strengthen ongoing maintenance



What Will a Referendum Fund?

A limiting rate referendum would support every aspect of the park district.

This includes but is not limited to:

**EXECUTE
2023 MASTER PLAN
PROJECTS**

**STRENGTHEN
ONGOING
MAINTENANCE**

**INCREASE
PARK DISTRICT'S
GROWTH CAPACITY**



Strengthen Ongoing Maintenance

Beyond Capital projects this is our moment to enhance maintenance to meet the growing demands of our community by taking the current places/spaces we love to the next level.

Shown are a few examples of recurring maintenance costs in current market.

Outdoor Ice Rink
\$5k/year (water)



Court Repairs
\$70k



PIP Surface Replacement
\$400k



Natural Areas
Maintenance
\$30k/year



Baseball Field
Renovation
\$15k



What Will a Referendum Fund?

A limiting rate referendum would support every aspect of the park district.

This includes but not limited to:

**EXECUTE
2023 MASTER PLAN
PROJECTS**

**STRENGTHEN
ONGOING
MAINTENANCE**

**INCREASE
PARK DISTRICT'S
GROWTH CAPACITY**



Increase the Park District's Capacity to Grow

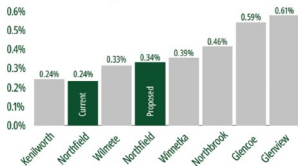
Looking ahead, a successful referendum will enable us to broaden our offerings and respond to the changing needs of our community.

- Acquire land for new parks and green spaces
- Expand programs, services and events



| Estimated Tax Impact | |
|----------------------|--------------|
| Property Value | Tax Increase |
| \$100,000 | \$30 |
| \$500,000 | \$150 |
| \$750,000 | \$225 |
| \$1,000,000 | \$300 |

Surrounding Park District Tax Rates



How Would this Referendum Affect Your Property Taxes?

- ▶ Small Increase, Big Impact
A 0.1% tax increase means about \$30 per \$100,000 of property value, or \$300 for a \$1M home*.
- ▶ This would sustain Northfield's position in the lower half of surrounding Park District Tax Rates.

**property value determined by the Cook County Assessor on your tax bill*

